



8-night Horse riding Safari – 1 night all inclusive Msasa Camp, 2 nights all inclusive Vintage Camp, 3 nights all inclusive at Camelthorn Lodge and 2 nights all inclusive at Gorges Lodge with road and rail transfers between the lodges.

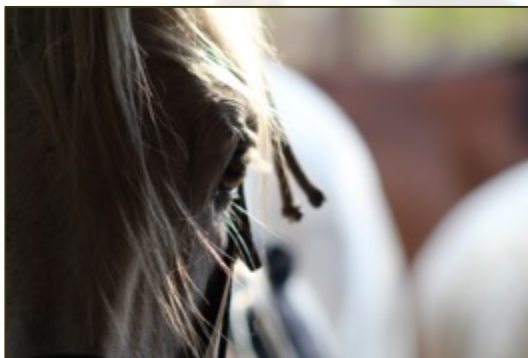
Eight Night Hwange Horseback Safari Sample Itinerary



DAY ONE

Arrive at Victoria Falls Airport where your Zimbabwean Safari experience begins. You will be met by a transfer vehicle for your road transfer to Msasa Safari Camp near Hwange National Park (2 hours).

After settling into your tent, enjoy some refreshments and lunch in the main lodge area. This will be followed by the introduction and orientation talk at the stables before heading for a short ride out to a nearby waterhole finding suitable horse and rider combinations. Sundowner drinks and snacks at the stables followed by the evening's entertainment and dinner at the main lodge.

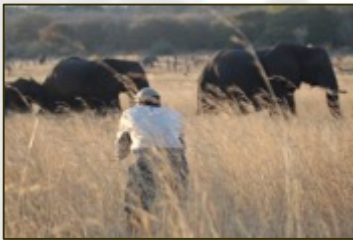


DAY TWO

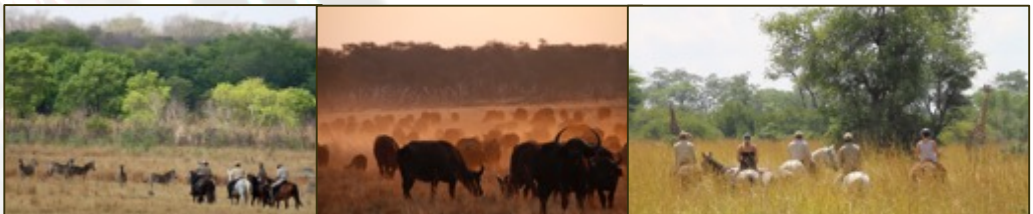
After an early breakfast head out on the horses making our way through the Hwange estate, viewing game, tracking animals, swimming the horses in water holes and arriving for lunch at your new home for the night, Vintage Camp Hwange. In the afternoon we head off on a game drive with the chance of sighting the world famous Presidential Elephants on their home range. Returning to camp for drinks on the deck and dinner



DAY THREE



Waking before sunrise with teas and coffees around the fire we head off with a professional guide for a walk on the painted dog concession. Walking in Hwange provides unparalleled game viewing and the opportunity to gain vast knowledge of the area and its fauna and flora. After a few hours of a good walk a tantalizing authentic African Bush Brunch will be waiting for you! We mount up again, this time making our way down to the renowned Dete Valley for an unforgettable game viewing experience. Back at camp that evening you can expect another wholesome dinner and stories around the campfire before retiring to your tent.



DAY FOUR



Rising to watch the sunrise before packing up and riding back to Msasa Safari camp, making the most of the wildlife sightings on the way! After settling the horses and a quick refreshment we take a short vehicle transfer to the Dete Railway Station where you will board the famous Elephant Express railcar! Enjoy lunch and refreshments on the train as you travel south to Ngamo siding. The Elephant express offers unique game viewing and magnificent scenery from the comfort of the railcar.

The Camelthorn 4x4 vehicle will collect you from Ngamo Siding and drive you into Camelthorn Lodge on the edge of Hwange National park, famed for its large elephant herds!

Once at Camelthorn, settle in to your forest villa and then enjoy a late afternoon tea, orientation and safety talk before a delicious dinner in the magnificent main lodge dining area.



DAY FIVE

Early morning tea and coffee in your villa watching the sunrise, followed by a delicious breakfast before heading down to the stables to be matched with your new safari horse! After an orientation and safety talk you will head off into the Ngamo Village on horseback where you can immerse yourself in the true culture of Zimbabwe whilst making a difference in the lives of communities living on the boundary of Zimbabwe's largest National Park.

After a short ride to the village you will be able to see some of Imvelo's community initiative projects firsthand as well as interact and engage with the local community in their homesteads and the children in their classrooms. You may even get the chance to help herd the cattle! Spend the rest of the morning exploring the magnificent expanse of Savanna grasslands before heading back to the lodge for lunch.



In the afternoon enjoy a high tea before heading into the National Park for a game drive in the stunning Ngamo Plains of Hwange National Park, escorted by your fully licensed and experienced guide who will share his knowledge and love of the bush with you. Finish off with a cold refreshment watching the beautiful African sunset. Dinner will then be served in the main lodge area and later fall asleep to the sounds of the African bush around you.



DAYSIX

An early start as you prepare for a long day in the saddle in true exploratory style with our experienced guides and trackers leading you through both Camelthorn and Bomani concessions in search of premier game viewing experiences. Expect long canters amongst herds of wildebeest, buffalo and zebra before riding onto an already set up bush lunch under the shade of a camelthorn tree.



After an exhilarating day in the saddle you will head back to camp to relax, perhaps enjoy a siesta or swim. Later that afternoon, get ready for a game drive into the park to our unique underground look up game viewing hide in front of Stoffie's Pan for sundowners and snacks and some amazing close up photographic opportunities with elephants before returning to camp for dinner. After dinner take advantage of a night game drive giving you a rare opportunity to see some of Hwange's nocturnal animals. Once

back at camp enjoy a night cap and stories round the camp fire before falling asleep for the last time in your luxurious forest Villa!



DAYSEVEN

After morning tea or coffee on your private deck, explore the wilderness one more time on horseback before packing up and boarding the Elephant Express for the return train ride to Dete Railway Station.

From Dete you will be transferred by road to Gorges Lodge on the edge of the Batoka Gorge, 200 metres above the mighty Zambezi River.

Spend the afternoon sipping delicious refreshments by the pool enjoying the amazing view and then in the evening head off to Dibu Dibu for sundowners and snacks while you watch the lodge's resident pair of black eagle's soar only metres away from you.

After the black eagle viewing take a leisurely stroll back to the main lodge reception area where you will be entertained by our team of talented traditional dancers and then enjoy a delicious 3 course dinner overlooking the gorge before retiring to your chalet and falling asleep to the sound of the river rushing below you.



DAYEIGHT

Enjoy early morning tea or coffee on your private veranda followed by a sumptuous breakfast in the main lodge dining area before your breathtaking walk along the gorge-edge. During your walk your guide will explain more on the history of Gorges and the indigenous landscaped gardens that Gorges has been built in.

Lunch will be served in the dining area and in the afternoon head into Victoria Falls town where you will be taken on a guided tour of Zimbabwe's foremost attraction - Victoria

Falls. "The smoke that thunders" remains one of the most spectacular natural wonders in the world. This will be followed by curio shopping at the craft village.

After your tour of the Falls you will be dropped off at the riverside dock in time to board your sundowner cruise along the Zambezi River

Return to Gorges Lodge in the evening for dinner, a traditional Zimbabwean 'braai', out under the stars (weather permitting)



DAYNINE

Enjoy the sunrise over the gorge while sipping steaming coffee or tea on your veranda followed by breakfast in the main lodge area and later catch your shuttle transport to Victoria Falls Airport for your departure flight...

Your once in a lifetime horseback adventure!



PLEASE NOTE FOR THIS PACKAGE:

- ✓ Rate includes national park entry fees
- ✓ Rate includes VF entry fee
- ✓ Please note the Elephant Express has to run according to scheduling specified by the National Railways of Zimbabwe and as such may be subject to delays and cancellations, which are beyond our control
- ✓ School visits are not possible during school holidays in April, August and December. However, guests will still be able to experience village visits in these months.
- ✓ Please note for horse riding there is an age limit of 16 years and a maximum weight allowance of 90 kg
- ✓ This is a sample itinerary and may change according to circumstances on the ground
- ✓ Riders should be fit and confident at all paces, we reserve the right to change, alter or cancel any ride based on the rider's ability.